

The portfolio of

Erik Gustavsson



About me



Me, not really standing beside an X-15A-2, wearing a high altitude flight suit

Name: Erik Gustavsson
Born: 1975
Nationality: Swedish

Contact information:

Phone: +46 (0) 706 936 576
Address: Furugatan 1
434 31 Kungsbacka
Sweden
Email: erik.gustavsson@xplane.se

Summary

I have 15 years of experience with web design, layout and illustration. I have been producing marketing materials, illustrations for presentational material, design concepts and I have also been involved in GUI design work, including usability issues.

I am very experienced in using the various software in Adobe Creative Studio, with Photoshop, Illustrator and Indesign being my main tools. I have also used other illustration software like the 3d tool, Google Sketchup.

Presently I am working at a Swedish company with a mainly Swedish market, but I have experience in working in a multinational corporation with marketing teams in several different countries. I have also experience from working in large teams as well as working independently.

Employment history

2006 02 –
KTC AB

Web designer/Graphic designer

I have been producing almost all marketing material for the KTC group since 2006. This includes websites, brochures, illustrations and photos. I have also been involved in product development on both hardware and software, producing concept illustrations for hardware design and GUI-design. On the software side I have designed icons, GUI mockups and some usability design.

Other responsibilities have been planning the company trade fair presence as well as representing the company at trade fairs.

Technical environment / role / tools: Adobe Indesign, Adobe Photoshop, Adobe Illustrator, Adobe Dreamweaver, Adobe Lightroom, Adobe Premiere, Adobe After Effects, Google Sketchup, HTML, CSS 3.0, SAVA/MURA CMS, Wordpress, Vision Project, MS Sql, ASP.net, MS IIS, Scrum, MS Office.

1999 02 – 2005 12

STS AB**Web designer/Graphic designer**

I designed, produced and maintained the websites for the different companies in the corporation. I worked in a larger in-house advertising team as webmaster and illustrator, producing various illustrations for the marketing material. I also produced ads and logotypes. I was also responsible for the IT support of the marketing department, since the IT department did not have the required Macintosh experience. I was responsible for introducing Mac OS X in to the computer environment as well as setting up a server solution with an Apple Xserve server and an Xraid raid, backed up by a tape robot.

Technical environment / role / tools: Macintosh G3 – G5, MacOS 9.x – MacOS X, Xserve, Xraid, Retrospect Backup, Windows 2000, Windows 2000 Server, Internet Information Server, Adobe Indesign, Adobe Photoshop, Adobe Illustrator, Adobe Dreamweaver, Macromedia Freehand, Macromedia Flash, Lightwave 3D, Quark Xpress, Lotus Domino (web design for Domino), HTML, XHTML, XML, CSS 2.0, ASP, MySQL, MS Office.

1997 04 – 1998 08

Manet AB**Web designer/Graphic designer**

Manet was a small web design bureau in Stockholm.

I designed and produced websites for customers. I was also responsible for designing and producing all the printed material, like posters, brochures and flyers.

Technical environment / role / tools: Macintosh G3, MacOS 8-9, Windows NT 4, Adobe Photoshop, Adobe Dreamweaver, Macromedia Freehand, Quark Xpress, Macromedia Flash Macromedia Director, Lightwave 3D, HTML, CSS 1.

*Skills, techniques & methods***Applications**

- Photoshop
- Illustrator
- Lightroom
- Indesign
- Google Sketchup 3D
- Dreamweaver
- Visual Studio (very little)

Methodology

- Scrum (a bit)

Programming

- HTML
- CSS

Databases

- MS Sql
- My Sql

Operating systems

- Windows (3.11 – 2008)
- MacOS X (and 7.1 -9.x)
- iOS 1-6

Education

1996 08 – 1997 03

Multimedia production

Mediaskolan, Stockholm

1994 06 – 1995 08

Military service/ Helicopter mechanic

Östgöta Arméflygbataljon

1991 08 – 1994 06

Upper Secondary Technical School

Berzeliuskolan, Linköping

Courses

- | | |
|------|-------------------------------------|
| 2006 | KTC SRD3000 introduction course |
| 2002 | Mac OS X administrators course |
| 2001 | Lotus Domino web development course |

Language

Swedish Native
English Very well

Personal

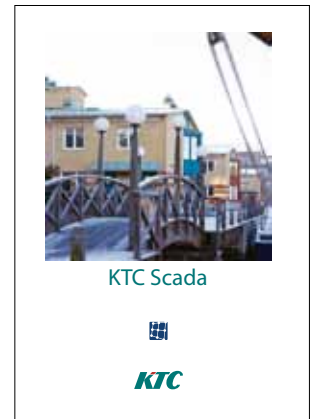
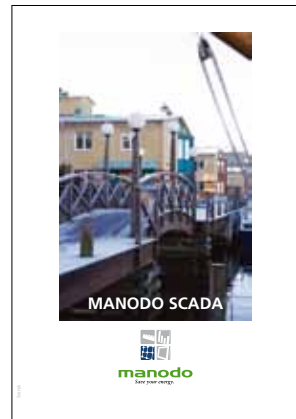
I live in the small but beautiful town of Kungälv just south of Göteborg, in a house with my girlfriend and our two kids, a son, nine year old, and a daughter, 13 year old.

I spend much of my spare time with my family and foremost my kids. But I also engage in some hobby activities, like photography and model building. I also try to get out for some physical exercise once in a while.

I believe myself to be humorous and fun loving, and easy to get along with.

Printed material

I have produced brochures, folders, adverts, signs, flags, roll ups, forms, diplomas, letterheads, business cards, packing materials, T-shirts, posters, flyers..I even once got to design the livery of an airline.



The same product, as it has been presented in product folders during the last six years.



One of my most odd works, designing the airliner livery of City Airline.



A 12 page brochure. Layout, illustrations and most photographic work by me.



Welcome to Future Living





Here's how you make it happen

Installation and connection
Install SBox on any appropriate wall. SBox then (via broadband) automatically finds the central Home Arena server. Home Arena provides most of the services displayed on SBox (or TV/mobile phone).

To make it easy for property managers and their residents, Manodo hosts the central server, handling all operations and supervision. You can install other options (ex. Automatic Meter Reading, video entry phones, laundry booking services) at the same time or later. In the event of existing systems such as electronic door controls or electronic laundry booking (for example) Home Arena and SBox are integrated with them via web services.



Home Arena topology simplified

Manodo also offers individual metering of heat and electricity, and for room temperature, a wireless, battery-driven room sensor for quick and easy installation. Manodo's measurement collection system is often integrated with existing management systems for billing and use specifications to residents.

Educational presentation of energy consumption
Residents often find it too complex to become engaged in household energy conservation but it doesn't have to be like that. With Manodo's energy services it becomes interesting, fun and even exciting to track your own energy usage. User-friendly functions and reports let residents measure their results, compare with their neighbors and follow their progress towards goals that can be defined in the system.

Energy optimization through reference temperatures in every apartment
Channeling room temperatures through a central control system enables well-tuned heating/cooling ("room compensation") reducing total energy use. Room temperatures can also be used for separate billing.



With Manodo's energy services, it's easy to get a quick overview of how much energy you use.



Manodo offers wireless sensors and nodes for individual metering.



A 24 page brochure where I created the layout, the illustrations and most of the photographs.
The format is a landscaped A4.

Web design

I have been working with the web since 1997, and I know HTML and CSS very well. I have worked with various CMS systems. The ones I have worked the most with are Sava/

Mura, ModX and last, but not least, WordPress. Here are some examples of websites I have designed.



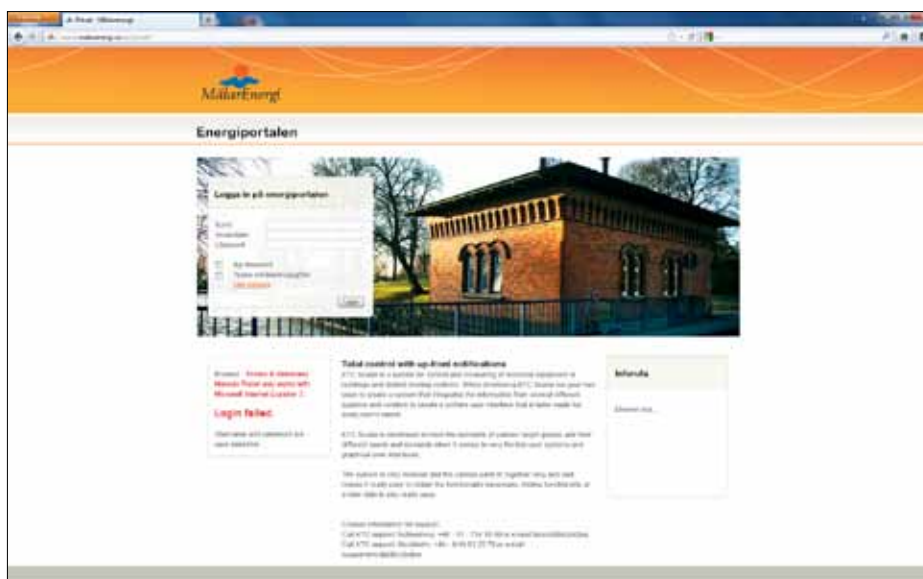
Website for KTC, 2008.
The website is running on a CMS called SAVA CMS.



Website for a photographer friend of mine, 2010.
This site is using a CMS called ModX.

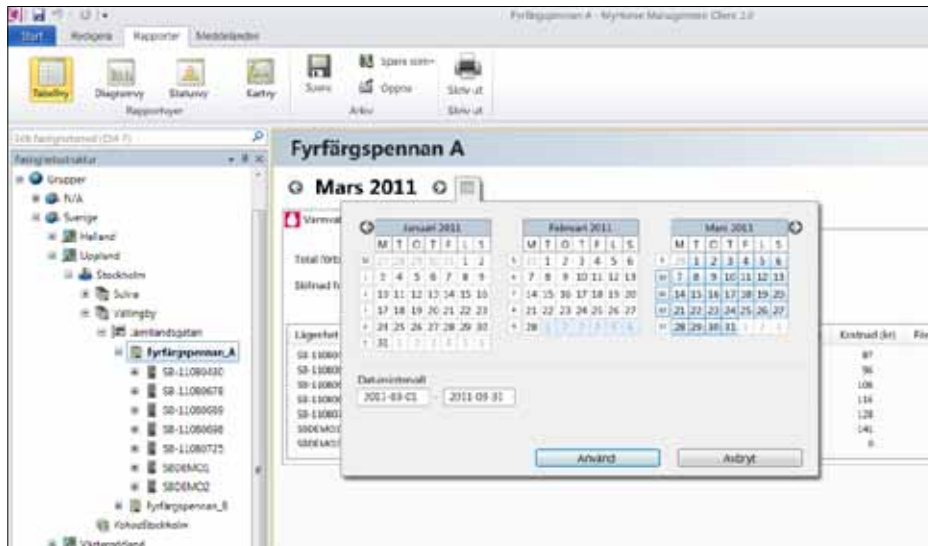


Mockup for a new website, running on WordPress. 2012.

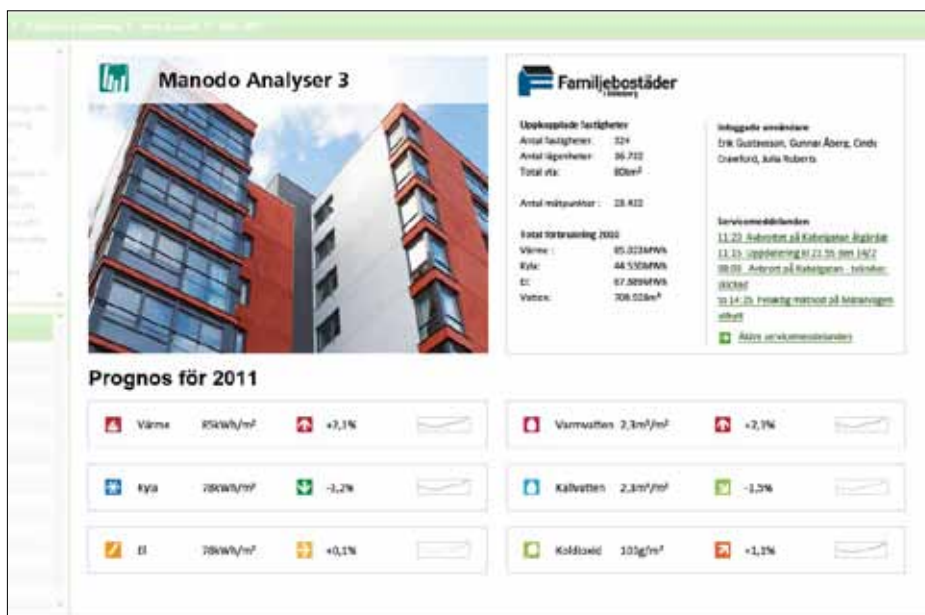


Some of my work has been adapting various applications to customer preferences, like this log in page that has been adapted to the graphic profile of the customer

Application design



This is a mock up of a software that presents energy consumption in residential buildings. To be more specific, it shows a suggestion for a dialogue that enables the user to select which period that should be shown in the report.



I was asked to design a first page for an online energy consumption report tool, so that the administrator for the property can get relevant information at a glance.



This is a mock up of an online tool for visualising energy consumption for the tenants. The page shown is the summary page, containing information on all the different consumables. If the tenants consumption is lower than the set energy savings goals, the tenant is greeted by a green page and a smiling smile (the smile is used in another energy tool as well, so this is efficient reuse of visual cues).



This is a slightly different version of the mock up above. In this case there has been no saving, and the consumption is much higher than the set goals. The smile is sad, and the user is awarded with a red screen.

Apartment Wizard

Apartment information

Size of the apartment and number of residents
For MeView to be able to give a suggestion for a target consumption it needs to know the size of the apartment and the number of residents.

Number of rooms (excluding kitchen) in the apartment:
☐ 1 ☐ 2 ☐ 3 ☐ 4 ☐ 5

Number of residents in the apartment:
☐ 1 ☐ 2 ☐ 3 ☐ 4 ☐ 5 ☐ 6 ☐ 7

Back Next Finish>> Close

Apartment Wizard - Step 1 of 3

Welcome to MeView. In order to give you good feedback on your energy consumption the system needs to collect some simple information from you. The collected data is only used internally by MeView, and will not be used for anything else.

Step 1 Apartment information

Number of rooms (excluding kitchen) in apartment?
☒ 1 ☐ 2 ☐ 3 ☐ 4 ☐ 5

Number of residents in apartment?
☐ 1 ☐ 2 ☐ 3 ☐ 4 ☐ 5 ☐ 6 ☐ 7

Back Next Finish>> Close

These images are parts of a wizard in which the user sets the relevant energy consumption targets in the application above. The left alternative is the developers take on design, the right alternative is my suggestion.

In the step above, the user enter the size of the apartment and number of residents. In the pictures below, the user is allowed to change the default values, to be able to save energy more aggressively, or not.

Apartment Wizard

Target consumptions

The target consumption is 80 % of the average consumption for each consumption type adjusted.
The average consumption displayed is the average consumption in Sweden for an apartment with 3 room(s) and 3 resident(s).

You can specify different target consumption for each consumption type by selecting cells in the "Base Goal Consumption" column.

Consumption Type	Target Consumption
Electricity average consumption 3.5 kW/day	2.8
HotWater average consumption 40 l/day	32
ColdWater average consumption 70 l/day	56

Back Next Finish>> Close

Apartment Wizard - Step 2 of 3

Target consumptions

The predefined target consumption is 80% of the average consumption for each consumption type.

The values displayed below are based on the average consumption in Sweden of an apartment with 3 rooms and 3 residents. You can change the predefined value simply by clicking in one of the boxes and type your own value. To return to the predefined values, simply click the reset button.

Electricity	Average consumption 3.5 kW/day	2.8
Hot water	Average consumption 40 l/day	32
Cold water	Average consumption 70 l/day	56

Reset

Back Next Finish>> Close

I can Icon

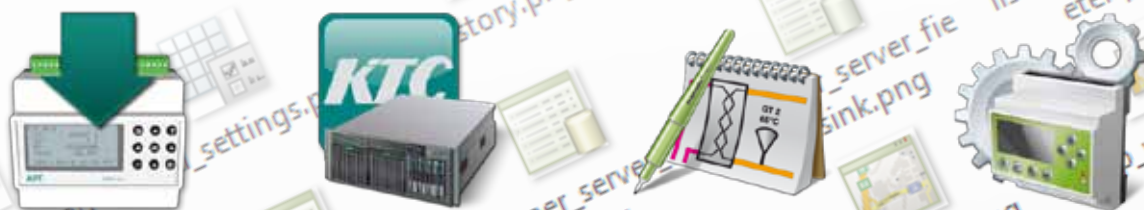
We have developed a web based platform for use with IPTV or a special touch display installed in an apartment, offering the residents a tool to check their energy consumption, the weather, traffic situation and other services. At the same time the landlord is given a tool to easily communicate with the residents, even if the residents lack computer skills or even a computer.

I have been tasked through out the development of the platform to create icons and various customer specific skins.

Home screen of MyHome platform on SBox apartment display.



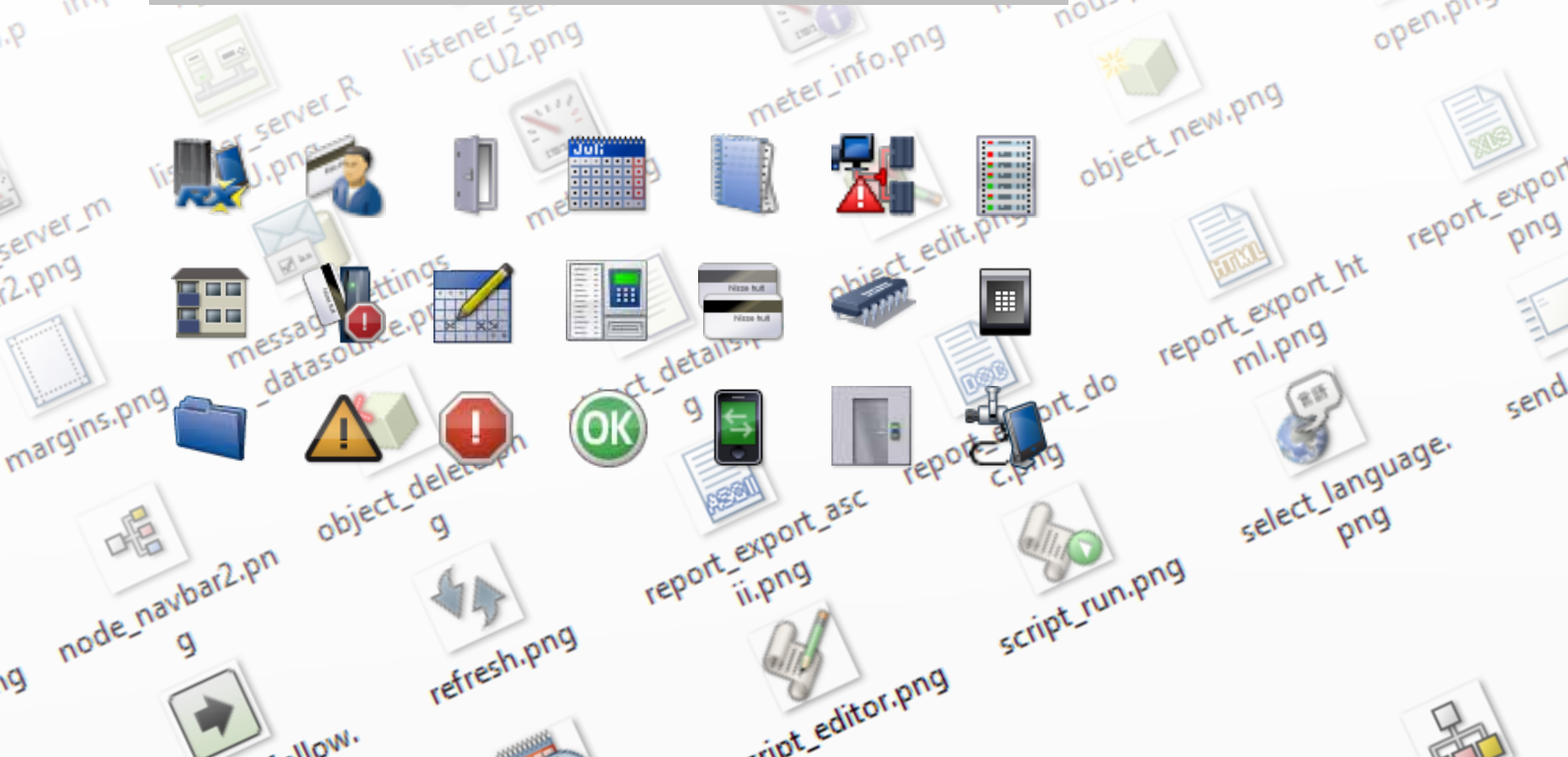
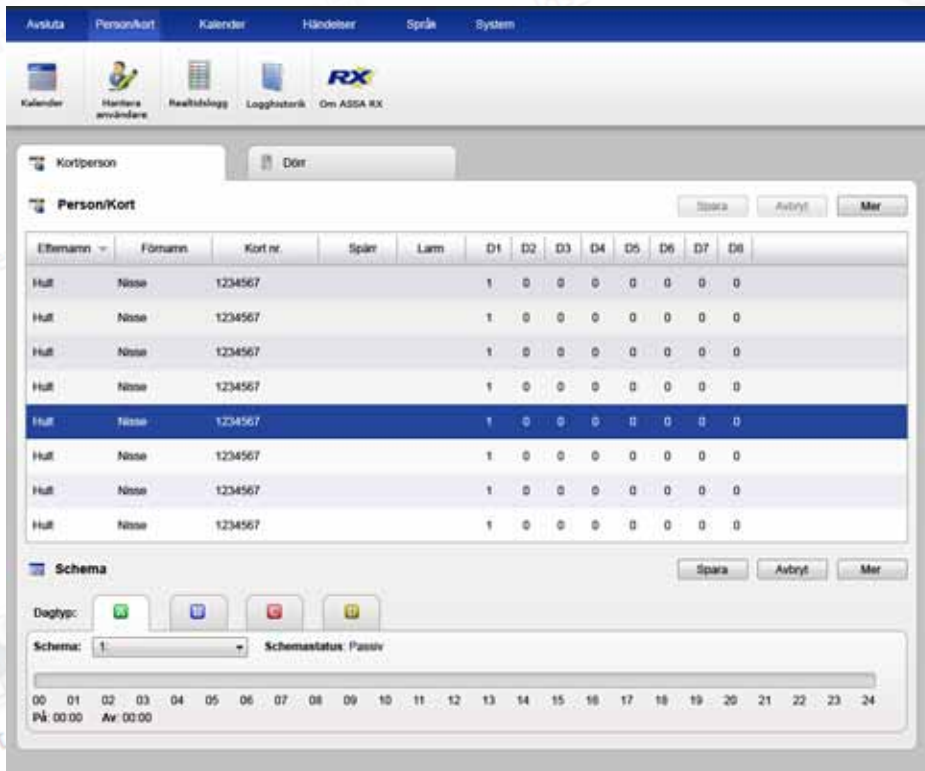
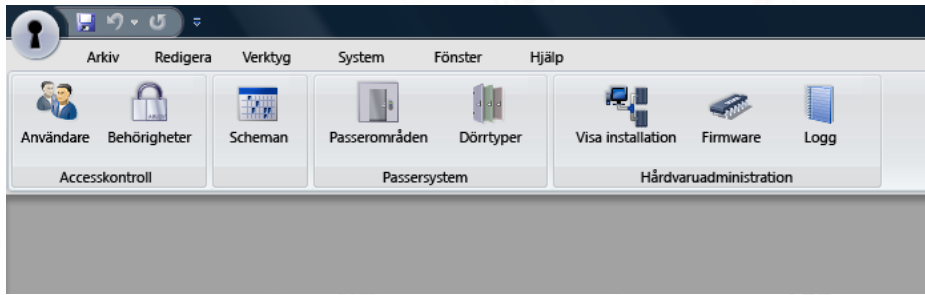
Above are just a few of the about 700 icons made for the aforementioned platform.



These icons are application icons for various software developed by KTC and Manodo.

More
Iconic work

At Manodo we had at a time a joint project with ASSA Abloy. One of the project managers involved took note of my icons, and asked me if I could help them with icons for a pair of applications they were developing.



Illustrations and Logotypes

During my career I have been doing all kinds of illustrations, from logotypes to 3D visualisations. These are

some of my more recent works.



This is a logotype for a communications consultant in Uddevalla. The bridge is a prominent feature of the region, as well as it represents communication and connection.



These symbols were created to represent at first, four different products, but has come to represent four families of products.

The first one represent analysing data, the second is about connecting and controlling, the fourth is about collecting data (metering) and the final symbol represent visualization of collected data.



This illustration uses the symbols above to show five steps that should be taken to make buildings more energy efficient. The symbols represent the different product families used in each steps. The illustration has been made in several different versions, further detailing each step with corresponding hardware drawn inside the building.



I made a little "joke" on the boys in my sons football team. Since Football trading cards are so popular among the boys I made similar cards with my son and his teammates. They are very popular!



Super heroine, drawn by hand, scanned and coloured in Photoshop. Made for an internal company presentation.



X-15A2, drawn in Adobe Illustrator.



3D-model built in Google Sketchup, several different images were rendered and then composed in Photoshop to get a see-through effect.

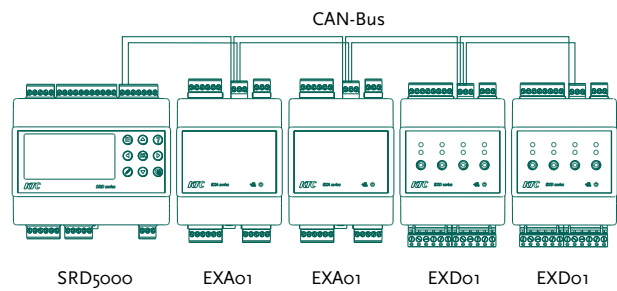
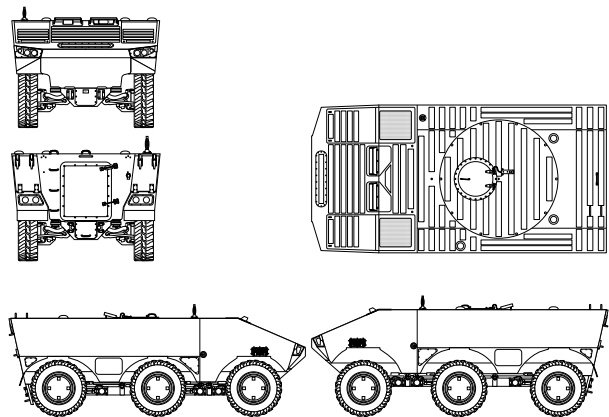


Illustration used in product folder and educational material. Google Sketchup was used for rendering the hardware, the illustration was finalised in Illustrator.



Scale drawing of the armoured vehicle prototype SEP, made in Illustrator, based on photographs.

A bit of Photoshop fun

I have always enjoyed playing around in Photoshop. To take different images and combine them in to something

completely new, or just to draw something from scratch in Photoshop and see it become alive on the screen.



Do you have what it takes, the Swedish Defence Forces ask their recruits, well, do the Defence Forces and the community as a whole have what it takes this image asks. It's made for a friends website.



This is a self portrait of me as a gamer nerd, with a friendly nod to the graphic art of Battlefield 3.



These images were commissioned by SAAB to be used on mouse mats that was given to participants of various courses. They represent the different users of the Gripen aircraft.

Photography

Have camera, will travel.



Erik Gustavsson

Furugatan 1
434 31 Kungsbacka
Sweden

Tel: +46 706 936 576

E-mail: erik.gustavsson@xplane.se

